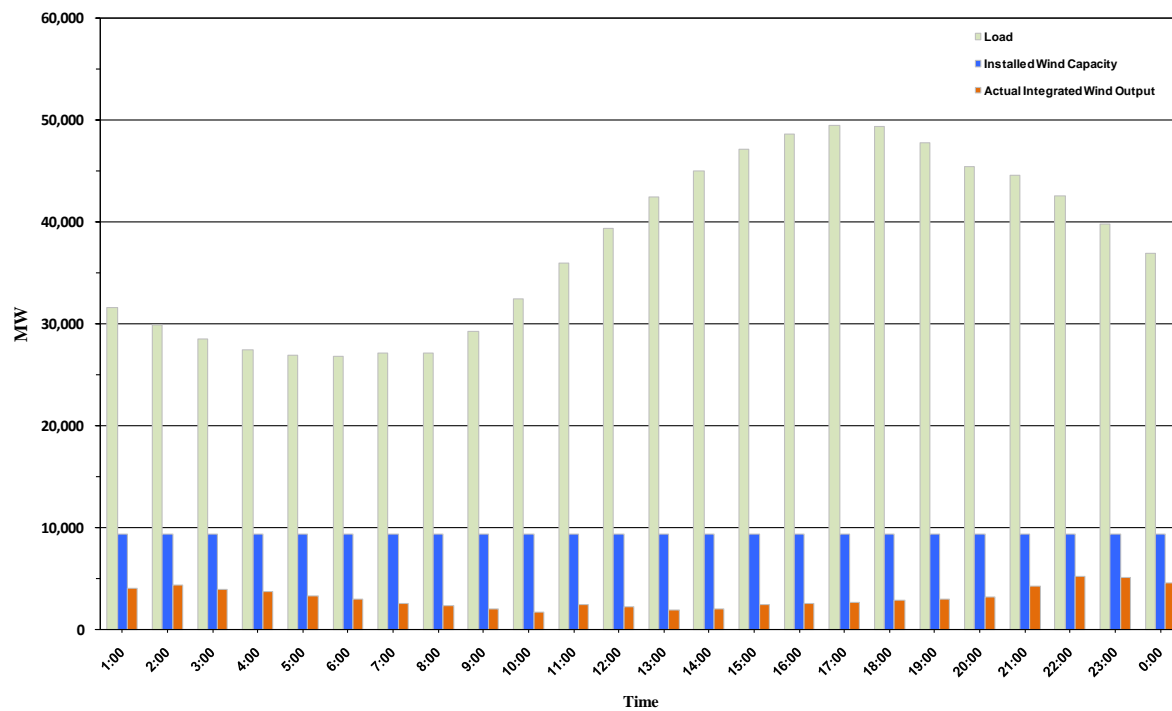




ERCOT Grid Operations Wind Penetration Report: 09/05/10

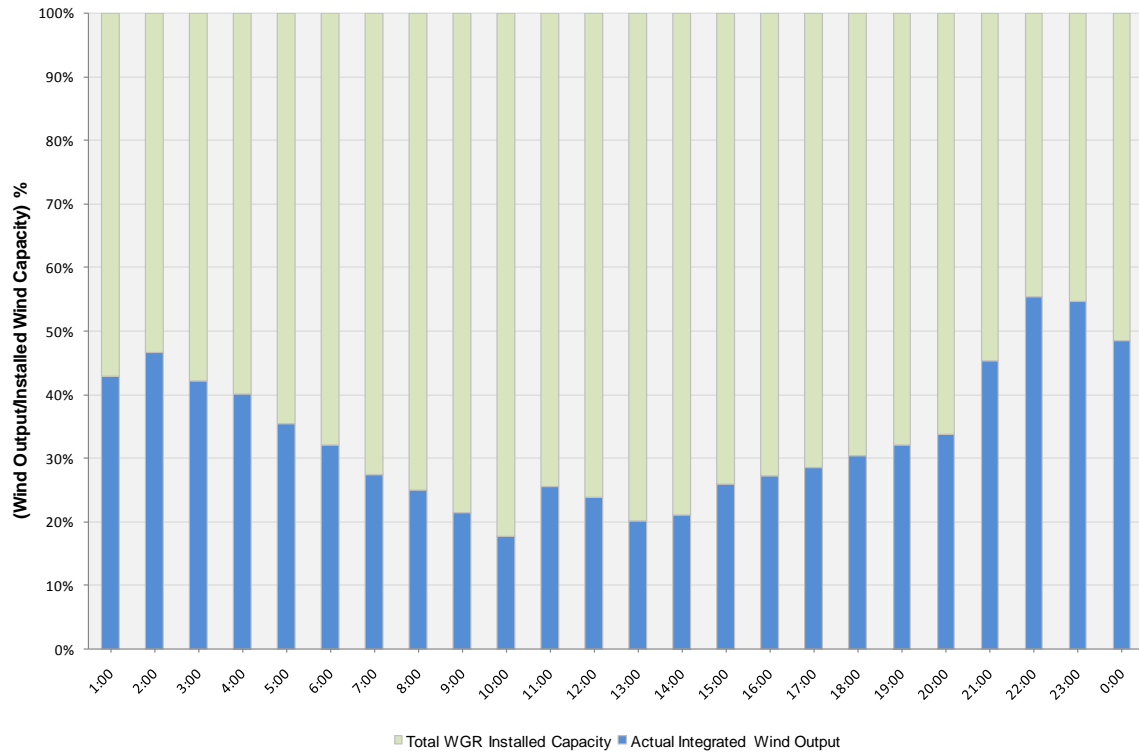
Peak Load	49,469 MW
Load Peak Hour	17
Wind Record 06/12/10	7016 MW
Max Wind value	5521 MW
Wind Peak Hour	21:09:00
Wind Penetration %	12.69

Hourly Average Actual Load vs. Actual Wind Output
09-05-2010

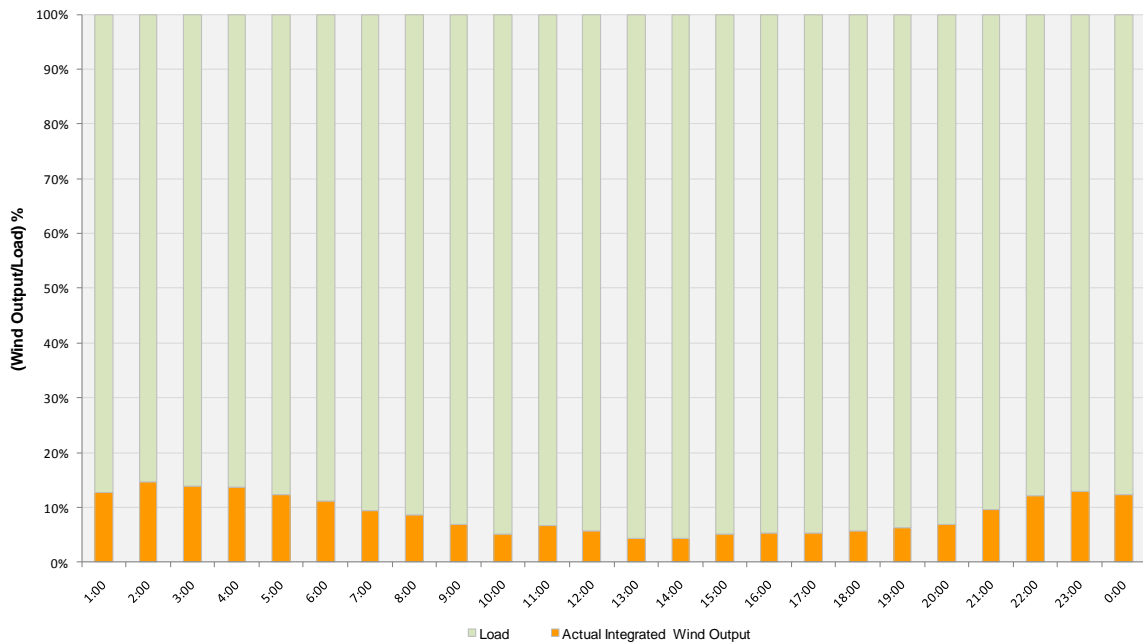




Actual Wind Output as a Percentage of the Total Installed Wind Capacity
09-05-2010



Actual Wind Output as a Percentage of the ERCOT Load
09-05-2010





ERCOT Load vs. Actual Wind Output 08/29/10 - 09/05/10

